

Athlete guide



CHARLEROI
MARATHON

1. Introduction

For three years now, the Charleroi International Marathon has been an essential sporting event in the Carolo landscape. Much more than just a race, it embodies a real human, sporting and collective adventure, bringing together hundreds of runners from Belgium and elsewhere every year.

Since 2024, the event has experienced a continuous growth in its participation, testifying to its attractiveness and its anchorage in the territory. In 2025, more than 3,000 participants took the start of the various races, making the marathon the largest Carolo sporting event.

Over the editions, the marathon has been able to highlight the territory, its strong identity and its dynamism, by offering a unique route in the heart of Charleroi and its municipalities. Each kilometre travelled tells a story, that of a city in motion, proud of its energy and its ability to gather.

Such an event could not exist without the valuable involvement of many actors. We would like to extend our most sincere thanks to the City of Charleroi, for its support and trust, essential to the development and sustainability of the project.

We also thank all the volunteers, whose commitment, availability and good humour are at the heart of the success of the event. Their presence on the field not only guarantees the smooth running of the race, but also the warm atmosphere that makes the reputation of the marathon.

Our thanks also go to all our partners, public and private, who actively contribute to the quality of the organisation and the experience offered to participants.

Finally, we warmly welcome all runners, whether they are amateurs or confirmed. Through their presence, their motivation and their passion, they give full meaning to this event and participate in making Charleroi vibrate to the rhythm of the marathon.

The International Marathon of Charleroi is above all a meeting between a city, its inhabitants and a community of enthusiasts, united around the values of sport, self-improvement and sharing.

Table of Contents

1.	Introduction	2
2.	Program	5
3.	Marathon	6
	Pacer	
	Time limit	
	Course	
	Refuelling	
	Marathon pack	
4.	Semi-marathon	9
	Pacer	
	Time limit	
	Course	
	Refuelling	
	Semi-marathon pack	
5.	10 & 5km	12
	Time limit	
	Course	
	10 & 5km pack	
6.	Various	14
	Place of departure	
	Shuttle	
	Marathon village	

	Cloakrooms	
	T-shirt	
	Medal	
	Bib number	
	Prize money	
	Parkings	
	Day nursery	
	Supporters	
	Sécurité	
	Homologation	
7.	Partners	23

20
26



CHARLEROI
MARATHON

2. Program

SATURDAY 25/04

- 16h00 : Opening of the marathon village & secretariat
 Removal of bibs and t-shirts
 ↓
 20h00: Sluiting dorp marathon

SUNDAY 26/04

- 06h30: Opening of the marathon village & secretariat
 Removal of bibs and t-shirts
 ↓
 07h30: Marathon shuttles from the Grand Palais
 ↓
 08h00–08h30: Half-marathon shuttles from the Grand Palais
 ↓
 08h30–09h00: Shuttles 5 km from the Grand Palais
 ↓
 09h00–09h30: Shuttles 10 km from the Grand Palais
 ↓
 09h00: Marathon departure (Bois du Cazier)
 ↓
 09h30: Half-marathon start (Bois du Cazier)
 ↓
 10h00: Departure 5 km (Bois du Cazier)
 ↓
 10h30: Departure 10 km (Bois du Cazier)
 ↓
 12h30: "Scratch" awards ceremony
 ↓
 14h00: Presentation of the categories
 ↓
 15h00: End of all races
 ↓
 18h00: Marathon village closure

3. Marathon

Pacer

To allow you to achieve your goals, pace leaders will be present. These will be equipped with a t-shirt and a flag mentioning the look (all in the colours of our partner Trakks).

Allures: 3h1 | 3h15 | 3h30 | 3h45 | 4h | 4h15 | 4h30 | 4h45

Time limit

We give you a limit of 6 hours to realise your adventure. This represents +- from 9 minutes to the kilometre.

If you are late on the time barrier, we will unfortunately have to stop you.

Course

The route is available via the platform of our partner Openrunner. You can click on the following logo to discover it.



OPENRUNNER

Refuelling

During your journey, we will make every effort to ensure that you are in the best conditions!

Refuelling will be present every 5km.

This refuelling plan was established by sports nutritionists.

Remember to take a flask with you if you want to have water between each refuelling.

Here's how the refuelling will take place.

The gels, energy bars and isotonic drinks are from the Decathlon brand.

The water will be served in 20cl cardboard cups.

We count on you to throw your waste in the bins placed at each refuelling.

					
	Water	BANANAS	ISO+ RED FRUITS	CHOCO CÉRÉAL BARS	ENERGY GEL + CITRON
R1 (5km)	X				
R2 (10,2km)	X	X			
R3 (15,5km)	X	X	X		
R4 (20,4km)	X	X	X	X	X
R5 (25,5km)	X	X	X	X	X
R6 (29,4km)	X	X	X	X	X
R7 (34,9km)	X	X	X	X	X
R8 (38,4km)	X	X	X	X	X

The final refuelling will be done in the runner's area.
You can enjoy a complete refuelling with water, oranges, chips, biscuits...

After refuelling, you can go to the massage area run by the students of the Helha.

Marathon pack

Participating in the international marathon of Charleroi entitles you to a special marathon pack. Here's what it contains:



The
collector's
t-shirt

The
finisher
medal

The
bib with
microchip

A
Powerade
drink

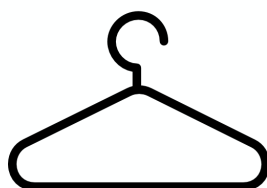
8 refuelling + 1
on arrival

Secure lockers

A massage
after the
effort.



RAVITAILLEMENT



HELHa
Haute École Louvain en Hainaut

4. Semi-marathon

Pacer

To allow you to achieve your goals, pace leaders will be present. These will be equipped with a t-shirt and a flag mentioning the look (all in the colours of our partner Trakks).

Allures: 1h35| 1h45| 2h00 | 2h15| 2h30| 2h45| 3h00

Time limit

We give you a limit of 3 hours to realise your adventure. This represents +- from 9 minutes to the kilometre.

If you are late on the time barrier, we will unfortunately have to stop you.

Course

The route is available via the platform of our partner Openrunner. You can click on the following logo to discover it.



OPENRUNNER

Refuelling

During your journey, we will make every effort to ensure that you are in the best conditions!

Refuelling will be present every 5km.

This refuelling plan was established by sports nutritionists.

Remember to take a flask with you if you want to have water between each refuelling.

Here's how the refuelling will take place.

The gels, energy bars and isotonic drinks are from the Decathlon brand.

The water will be served in 20cl cardboard cups.

We count on you to throw your waste in the bins placed at each refuelling.

					
	WATER	BANANAS	ISO+ RED FRUITS	CHOCO CÉRÉAL BARS	ENERGY GEL + CITRON
R1 (5km)	X				
R2 (9,6km)	X	X	X	X	X
R3 (13,7km)	X	X	X	X	X
R4 (17,3km)	X	X	X	X	X

The final refuelling will be done in the runner's area.
 You can enjoy a complete refuelling with water, oranges, chips, biscuits...
 After refuelling, you can go to the massage area run by the students of the Helha.

Half-marathon Pack

Participating in the international half-marathon of Charleroi entitles you to a special half-marathon pack. Here's what it contains:



The
finisher
medal

The
bib with
microchip

Powerade
drink

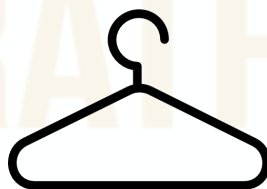
4 refuelling + 1
on arrival

Secure lockers

A massage
after the
effort.



RAVITAILLEMENT



HELHa
Haute École Louvain en Hainaut

5. 10 & 5km

Time limit

We give you a limit of 1h30 for the 10km and 45 minutes for the 5km. This represents +- from 9 minutes to the kilometre.

If you are late on the time barrier, we will unfortunately have to stop you.

Course

The route is available via the platform of our partner Openrunner. You can click on the following logo to discover it.



Pack 10 & 5km

Participating in the 10 & 5km of the Charleroi international marathon entitles you to a special 10 & 5km pack. Here's what it contains:



RAVITAILLEMENT

The
bib with
microchip

Powerade
drink

Refuelling
on arrival

Secure lockers

A massage
after the
effort.



HELHa
Haute École Louvain en Hainaut

For the 10km, a water supply will also be offered halfway through the route.

6. Various

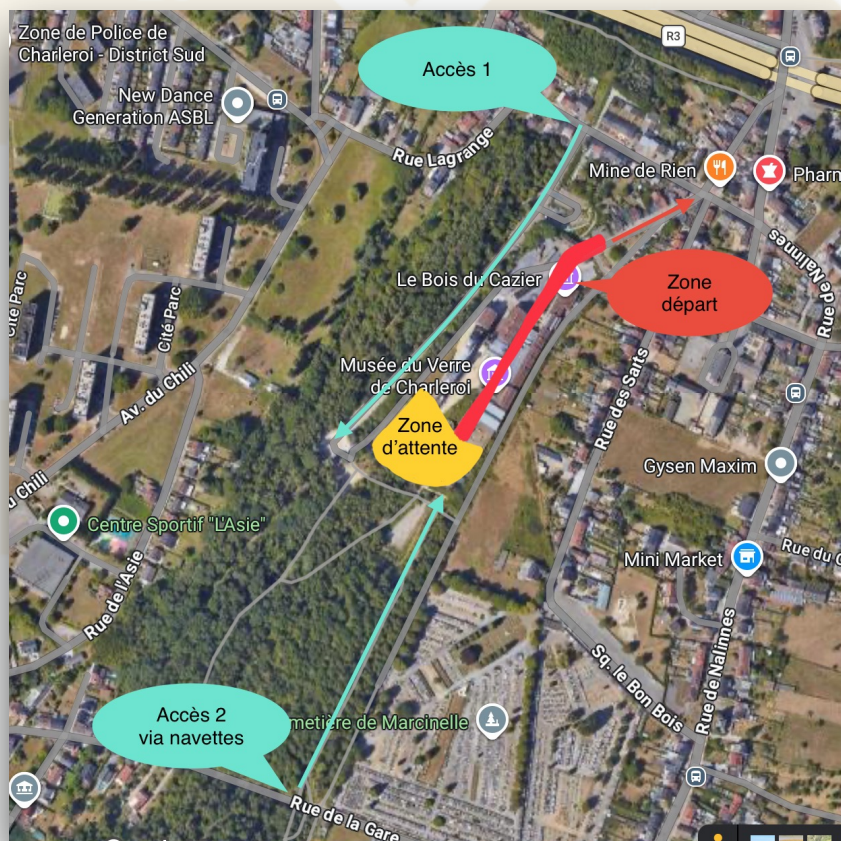
Place of departure

Adresse: <https://maps.app.goo.gl/gZbBDKeNQhfSev148>

We advise you to favour the shuttle to get to the departure. Indeed, access will be very complicated.

Be careful, it will not be possible to enter through the main party of the Bois du Cazier. The entrance will be from the side or from the back.

Before heading to the departure zone, you will have to wait in the waiting area. Thanks to our partner NRJ, a DJ will be present to make you pass the time.



Once in the starting area, you can go to the "Totems" of pace.

Shuttles

Address: <https://maps.app.goo.gl/q469LXUAc7Jcw8TL6>

When you registered, you could choose whether you wanted the shuttle or not. You will notice a "shuttle" icon on your bib, it is your entrance ticket.

These shuttles will wait for you along the Grand Palais at the time you booked when you registered.

Schedule:

Marathon: 7:30 am

Half-marathon: 8h/8h30am

5km: 8:30 am/ 9am

10km: 9h/ 9h30am

Be careful, it is possible that the shuttle does not leave at the scheduled time. A shuttle will never leave with less than half the capacity.

If you have not booked shuttles, you will have to go to the Bois du Cazier by your own means. If this is the case, consider giving your belongings to a loved one or dropping them off before your departure in the "designation" space provided in the marathon village.

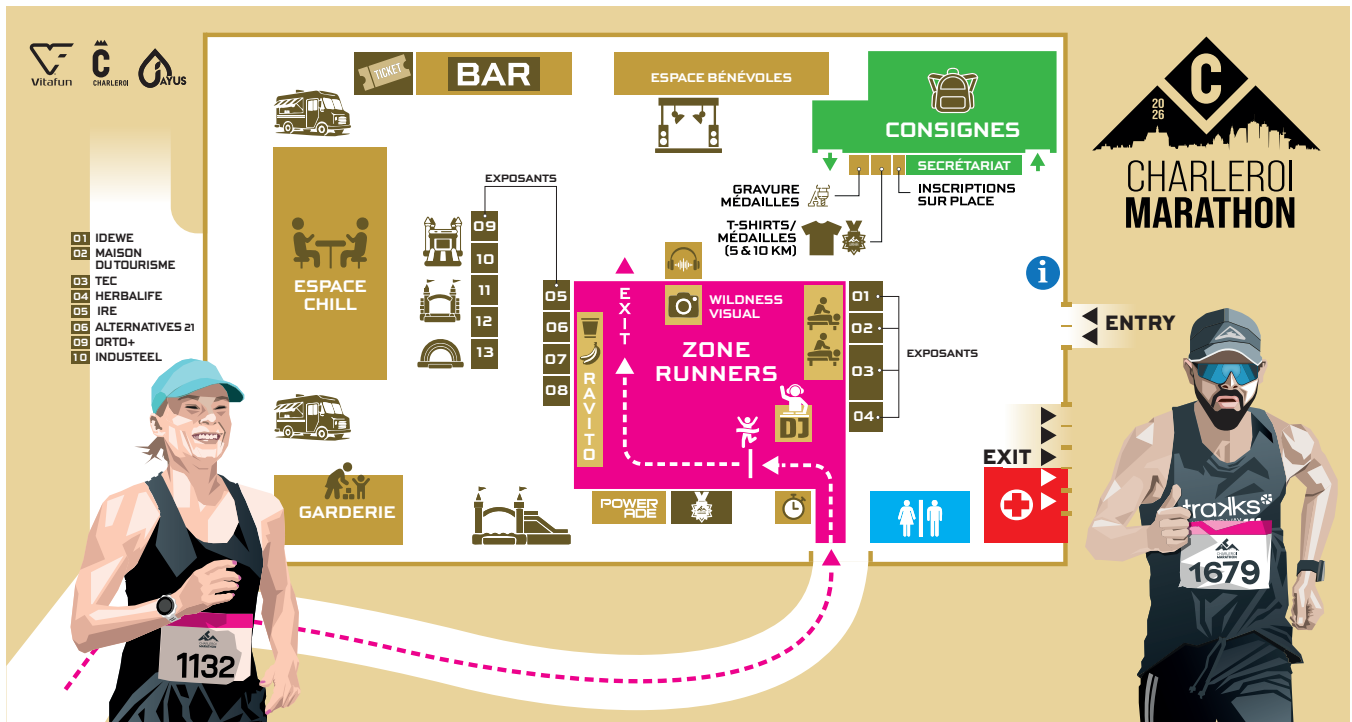
Shuttle exit journey to departure.



Marathon Village

Address: Palais 2, Rue de l'Ancre, 6000, Charleroi.

Lien Google maps: <https://maps.app.goo.gl/yR71K94v2D3KFHCF8>



The marathon village of the International Marathon of Charleroi will have the honour of settling in the Grand Palais de Charleroi, in the Palais 2.

Formerly Palais des Expositions built in the 1950s, this iconic place has long been the scene of major popular events, marking generations of Carolos. Today completely renovated, it embodies the renewal of the city.

Welcoming the marathon village there is to connect history and modernity, and to offer participants a setting that lives up to the event, at the heart of the Carolo identity.

Cloakrooms

Before you leave, you can leave your belongings in the "consignes" space in the marathon village.

Once your bag is deposited, all you have to do is go to the departure thanks to the shuttle service of our partner "Le Tec" or by your own means.

At the international marathon of Charleroi, we operate with an autonomous locker system.

Mode of operation:

1. You will notice on your bib a detachable band with your bib number. We ask you to detach it and place it around the strap of your bag.
2. You will then have to go to the aisle corresponding to your bib and place it on the dedicated tables.
3. When you come to pick up your bag, you must show us your bib when you enter the locker area.
4. When leaving this space, you will have to show us your bag with the numbered strip corresponding to your bib number.

👉 You will have understood, your bib is imperative to retrieve your bag.



+
45L



T-shirt

The official t-shirt of the Charleroi Marathon celebrates the 360 years of the city through a strong and symbolic design.

Its motifs inspired by the Vauban fortress recall Carolo's historical identity, while the star embodies self-improvement and the desire to go further and further. The contrast between black and gold brings an elegant and powerful touch to the image of the city and its runners.

A unique t-shirt, memory of an exceptional anniversary edition.

This one will be waiting for you on Saturday, April 25 from 4 p.m. to 8 p.m. or Sunday, April 26 from 6:30 a.m. at the stand "T-shirt and medals 5 & 10km".



Medal

The medal of the International Marathon of Charleroi was specially designed and worked to honour the 360 years of the city. Its emblematic shape is directly inspired by the Vauban fortress, a strong symbol of Carolo history, and is drawn as a star.

This star not only refers to the city's architectural past: it also embodies ambition and self-improvement, inviting each runner to look higher... up to the stars

Its gold colour underlines the richness of this heritage, but also the value of the effort made. She rewards each finisher with brilliance, as a symbol of perseverance, pride and belonging to the carolo identity.

If you participate in the marathon and half-marathon, it will be around your neck at the finish.

On the other hand, if you participate in the 10 or 5km and you bought this one, you can pick it up at the "t-shirt & medals" stand after your race.



Bib number

JEAN-FRANÇOIS

Secours: 0468/03.66.39

9999

M Sexe
 Navette
 T-shirt
 Médaille
 Gravure médaille

MARATHON 26/04/26

CHARLEROI MARATHON Vitafun CHARLEROI AYUS aperam Industeel DECATHLON idewe trakks Sobeltax

À détacher et placer sur votre sac
 Detach and place on your bag
 Maak los en plaats het op je tas

9999 Ticket consignes

Most of the information mentioned during your registration can be found on your bib. You will notice a detachable band at the bottom of your bib. This band will have to be placed on your bag for the deposit.




On the back of your bib, you can, as a precaution, enter your personal information.

Attention, this bib is personal and cannot be exchanged.

Prize money

Each male and female winner of each distance will receive a Prize money.

For the categories, the first man and the first woman will receive a voucher from our partner Trakks.

	 Man & Woman	 Man & Woman	 Man & Woman
Marathon	600 €	300 €	150 €
Semi-marathon	300 €	150 €	75 €
10km	50 €	40 €	30 €
5km	50 €	40 €	30 €

Parkings

	P1	P2	P3	P4
Capacity	+800	+1000	+440	+270
Price	Gratuit	1,9€/h	+ 2€/h	+ 1,1€/h
Address	Rue de l'ancre, 27, 6000, Charleroi	Boulevard Tirou 20, 6000 Charleroi	Boulevard Tirou, 20, 6000, Charleroi	Place de la Digue, 21 à 6000 Charleroi
Google maps	P2 expo	Parking Rive Gauche	Qpark Tirou	Parking de la Digue
Walking time to the marathon village	2 min	10 min	10 min	8 min
Distance	200m	1km	1km	750m

Nursery

When you registered, you were able to choose if you wanted a place at the daycare centre for your child. On D-day, the daycare will be available and will be organised so that the children are safe and do not see the time pass!

The daycare centre will start at 7am.

Supporters

You have relatives who would like to encourage you, here is a map where the animations will be found.

=> <https://www.openrunner.com/route-details/20751314>

Sécurité

For your safety, we suggest you download the 112 application and write down this GSM number in your phone if you run with: 0468/03.66.39



Homologation

The marathon and half-marathon courses have been approved by the LBFA and are AIMS certified.

7. Partners

Administrations



Sponsors





20
26



Partners